



INNOTRONIX

CATALOG

DIGITAL SIGNAGES | IOT SOLUTIONS | SMART LIGHTING

www.innotronixlabs.com

PROUDLY MADE IN INDIA

CONTENT

Sr. No.	Item	Pg. No.
1.	DISPLAY SERIES	
1.1	FUEL STATION DISPLAY	
1.1.1	Monolith Screen - Indian Oil Corporation Limited	01
1.1.2	Monochrome Display - Indian Oil Corporation Limited	02
1.1.3	Monochrome Display- Nayara	03
1.1.4	Monochrome Display- Bharat Petroleum Corporation Limited	04
1.1.5	Full Colour Display	05
1.1.6	7 Segment Display- Hindustan Petroleum Corporation Limited	06
1.2	DIGITAL STANDEE & HOARDING	
1.2.1	Digital Standee	07
1.2.2	Digital Hoarding	08
2.	LIGHT SERIES	
2.1	Technical Light- Nayara fascia Light	09
2.2	Technical Light- BPCL Fascia Light	10
2.3	Technical Light- Column Light	11
2.4	Technical Light- Shelf Light	12
2.5	Linear Under Canopy Light	13
3.	MODULES AND STRIPS SERIES	
3.1	Mini Module	14
3.2	Regular Module	15
3.3	Large Module	16
3.4	Light Bar	17
3.5	Rigid Ip20 Strip	18
4.	POWER SUPPLY SERIES	
4.1	Constant Voltage Power Supply - 5V	19
4.2	Constant Voltage Power Supply- 12V	20
4.3	Constant Voltage Power Supply- 24V	21
4.4	Constant Current Led Driver	22
4.5	Constant Current Led Driver	23
4.6	Surge Protection Device	24

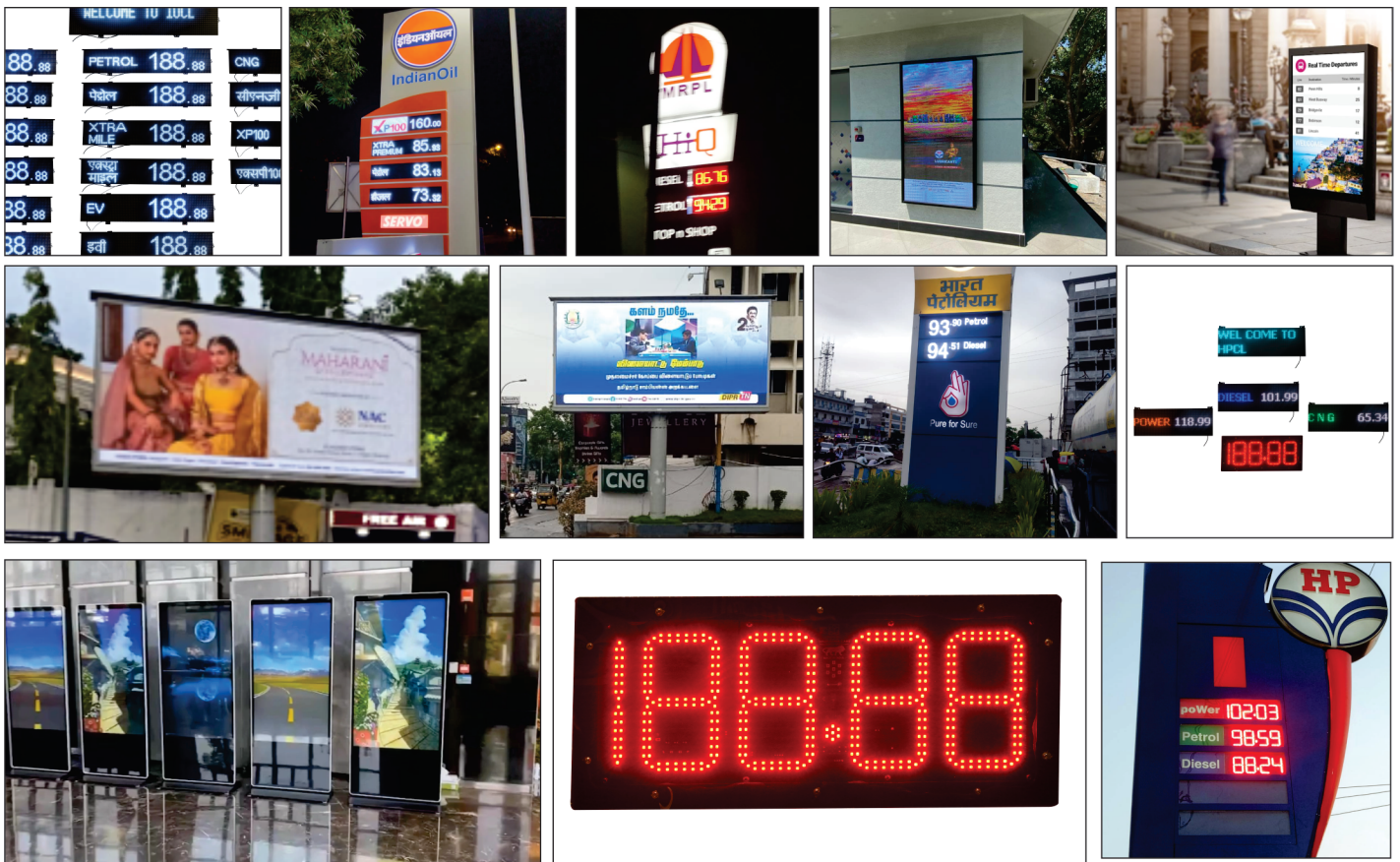
STRATEGIC PARTNER



CERTIFICATION



DISPLAY SERIES





FUEL STATION DISPLAY



Product Parameter

Input Voltage	: 230V
Ac Maximum Power	: 25W/sqft
Color	: Full Color
Warranty	: 5 years
Size of Display	: Customizable



Product Features

Brightness Level : A brightness level of 5000 nits is chosen to ensure clear visibility, even during hot summer afternoons.

Integration with Automation System : The display can be seamlessly integrated with the automation system already installed at the fuel station. This integration is facilitated through RS485 serial communication.

Display Capabilities : The display is equipped to showcase a variety of information, including fuel rates, density data, stock availability, and engaging promotional messages and campaigns.

Versatile Formats : The display supports multiple formats for content presentation. These formats encompass videos, images, presentations, and various others, enhancing its ability to convey information effectively.

Control via Software : Control and management of the display are facilitated using the Absolute Signage Management software. This software enables easy manipulation and customization of displayed content.

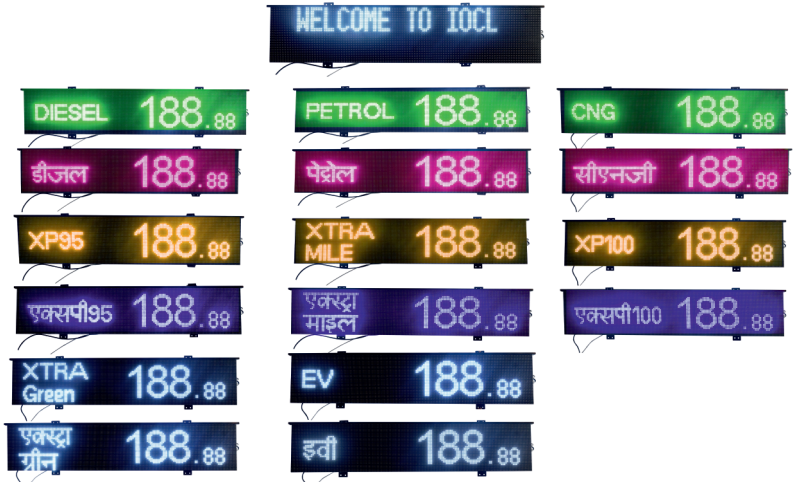
Application Notes

1. Monolith/Pylon/Unipole of the Fuel station.
2. Sales building of the fuel station.
3. Malls.
4. Currency exchange counters.
5. Banks.
6. EV Charging Stations.



Product Parameter

Input Voltage	: 230V
Ac Maximum Power	: 20W/sqft
Color	: Monochrome- White / Red / Green / Yellow and Others
Warranty	: 5 years
Size of Display	: Customizable as per application



Product Features

Brightness Level : A brightness level of 5000 nits is chosen to ensure clear visibility, even during hot summer afternoons.

Integration with Automation System : The display can be seamlessly integrated with the automation system already installed at the fuel station. This integration is facilitated through RS485 serial communication.

Display Capabilities: The displays is equipped a variety of information in alphanumeric format which could be fuel rates, density of fuel, stock availability, and engaging promotional messages and campaigns 4. **Multi Language Support:** For a country like India, where there are more than 26 languages spoken and written in different parts of the country, it is very important for a brand to locally relevant. Therefore, the displays have the capabilities to show alphanumeric text in the language of your choice.

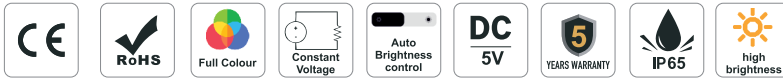
Control Options: The Monochrome displays can be controlled using the following modes:

a. WiFi Mode: This mode is required when the fuel station owner/staff wants to update the content on the display manually

b. Automation Mode: This mode is required when the oil company wants the display to be connected with their Fore court controller/ Automation system through RS485/232 medium of communication.

Application Notes

1. Monolith / Pylon/ Unipole of the Fuel Station.
2. EV Charging stations.
3. Sales building of the fuel station.
4. Banks.
5. Current exchange counters.
6. QSRs.



Product Parameter

Input Voltage	: 230V
Ac Maximum Power	: 20W/sqft
Color	: Monochrome- White / Red / Green / Yellow and Others
Warranty	: 5 years
Size of Display	: Customizable as per application



Product Features

Brightness Level : A brightness level of 5000 nits is chosen to ensure clear visibility, even during hot summer afternoons.

Integration with Automation System : The display can be seamlessly integrated with the automation system already installed at the fuel station. This integration is facilitated through RS485 serial communication.

Display Capabilities: The displays is equipped a variety of information in alphanumeric format which could be fuel rates, density of fuel, stock availability, and engaging promotional messages and campaigns 4. Multi Language Support: For a country like India, where there are more than 26 languages spoken and written in different parts of the country, it is very important for a brand to locally relevant. Therefore, the displays have the capabilities to show alphanumeric text in the language of your choice.

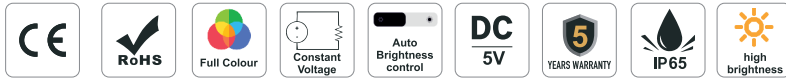
Control Options: The Monochrome displays can be controlled using the following modes:

a. WiFi Mode: This mode is required when the fuel station owner/staff wants to update the content on the display manually

b. Automation Mode: This mode is required when the oil company wants the display to be connected with their Fore court controller/ Automation system through RS485/232 medium of communication.

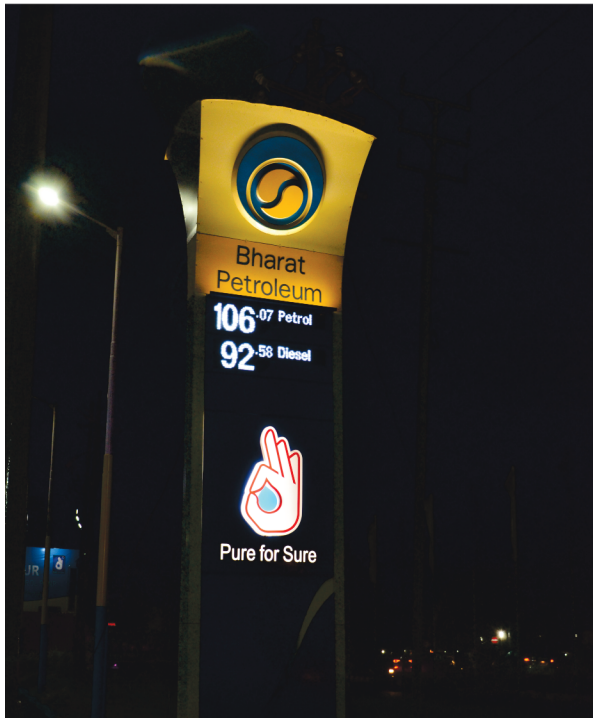
Application Notes

1. Monolith / Pylon/ Unipole of the Fuel Station.
2. EV Charging stations.
3. Sales building of the fuel station.
4. Banks.
5. Current exchange counters.
6. QSRs.



Product Parameter

Input Voltage	: 230V
Ac Maximum Power	: 20W/sqft
Color	: Monochrome- White / Red / Green / Yellow and Others
Warranty	: 5 years
Size of Display	: Customizable as per application



Product Features

Brightness Level : A brightness level of 5000 nits is chosen to ensure clear visibility, even during hot summer afternoons.

Integration with Automation System : The display can be seamlessly integrated with the automation system already installed at the fuel station. This integration is facilitated through RS485 serial communication.

Display Capabilities: The displays is equipped a variety of information in alphanumeric format which could be fuel rates, density of fuel, stock availability, and engaging promotional messages and campaigns 4. **Multi Language Support:** For a country like India, where there are more than 26 languages spoken and written in different parts of the country, it is very important for a brand to locally relevant. Therefore, the displays have the capabilities to show alphanumeric text in the language of your choice.

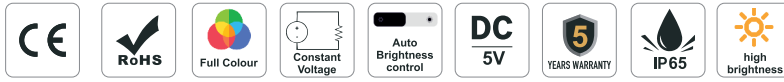
Control Options: The Monochrome displays can be controlled using the following modes:

a. WiFi Mode: This mode is required when the fuel station owner/staff wants to update the content on the display manually

b. Automation Mode: This mode is required when the oil company wants the display to be connected with their Fore court controller/ Automation system through RS485/232 medium of communication.

Application Notes

1. Monolith / Pylon/ Unipole of the Fuel Station.
2. EV Charging stations.
3. Sales building of the fuel station.
4. Banks.
5. Current exchange counters.
6. QSRs.



Product Parameter

Input Voltage	: 230V
Ac Maximum Power	: 25W/sqft
Color	: Full colour
Warranty	: 5 years
Size of Display	: Customizable



Product Features

Brightness Level : A brightness level of 5000 nits is chosen to ensure clear visibility, even during hot summer afternoons.

Integration with Automation System : The display can be seamlessly integrated with the automation system already installed at the fuel station. This integration is facilitated through RS485 serial communication.

Display Capabilities: The displays is equipped a variety of information in alphanumeric format which could be fuel rates, density of fuel, stock availability, and engaging promotional messages and campaigns 4. Multi Language Support: For a country like India, where there are more than 26 languages spoken and written in different parts of the country, it is very important for a brand to locally relevant. Therefore, the displays have the capabilities to show alphanumeric text in the language of your choice.

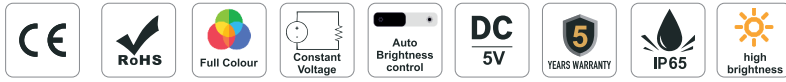
Control Options: The Monochrome displays can be controlled using the following modes:

a. WiFi Mode: This mode is required when the fuel station owner/staff wants to update the content on the display manually

b. Automation Mode: This mode is required when the oil company wants the display to be connected with their Fore court controller/ Automation system through RS485/232 medium of communication.

Application Notes

1. Monolith / Pylon/ Unipole of the Fuel Station.
2. EV Charging stations.
3. Sales building of the fuel station.
4. Banks.
5. Current exchange counters.
6. QSRs.



Product Parameter

Input Voltage	: 230V
Ac Maximum Power	: 25W/sqft
Color	: 7 Segment
Warranty	: 5 years
Size of Display	: Customizable



Product Features

Brightness Level : A brightness level of 5000 nits is chosen to ensure clear visibility, even during hot summer afternoons.

Integration with Automation System : The display can be seamlessly integrated with the automation system already installed at the fuel station. This integration is facilitated through RS485 serial communication.

Display Capabilities : The display is equipped to showcase a variety of information, including fuel rates, density data, stock availability, and engaging promotional messages and campaigns.

Numeric Fonts : Based on your design language, customized numeric fonts and colours can be designed. The rate of the products is distinctly visible from a distance of at least 500 meters based in the size of the font

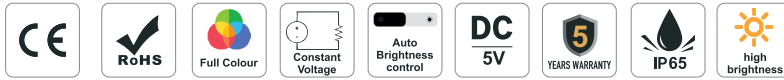
Control via Software : Control and management of the display are facilitated using the Absolute Signage Management software. This software enables easy manipulation and customization of displayed content.

Application Notes

1. Monolith / Pylon/ Unipole of the Fuel Station.
2. EV Charging stations.
3. Sales building of the fuel station.
4. Banks.
5. Current exchange counters.
6. QSRs.

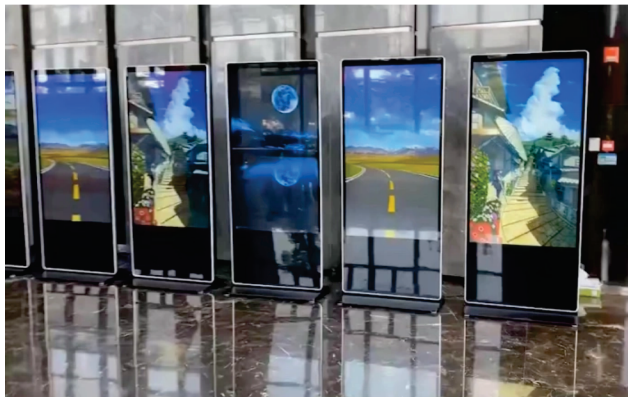


**DIGITAL
STANDEE
&
HOARDING**



Product Parameter

Input Voltage	: 230V
Ac Maximum Power	: 25W/sqft
Color	: Full Colour
Warranty	: 5 years
Size of Display	: Customizable



Product Features

Brightness Level : A brightness level of 5000 nits is chosen to ensure clear visibility, even during hot summer afternoons.

Integration with Automation System : The display can be seamlessly integrated with the automation system already installed at the fuel station. This integration is facilitated through RS485 serial communication.

Display Capabilities : The display is equipped to showcase a variety of information, including fuel rates, density data, stock availability, and engaging promotional messages and campaigns.

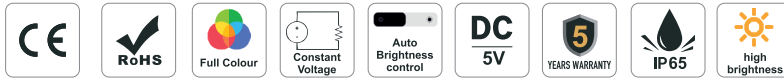
Versatile Formats : The display supports multiple formats for content presentation. These formats encompass videos, images, presentations, and various others, enhancing its ability to convey information effectively.

Control via Software : Control and management of the display are facilitated using the Absolute Signage Management software. This software enables easy manipulation and customization of displayed content.

Application Notes

1. Refineries.
2. Depots.
3. Terminals.
4. Buildings.
5. Sales room.
6. Fuel stations.
7. Transportation hubs.

1.2.2 : Digital Hoarding



Product Parameter

Input Voltage	: 230V
Ac Maximum Power	: 25W/sqft
Color	: Full Colour
Warranty	: 5 years
Size of Display	: Customizable



Product Features

Brightness Level : A brightness level of 5000 nits is chosen to ensure clear visibility, even during hot summer afternoons.

Integration with Automation System : The display can be seamlessly integrated with the automation system already installed at the fuel station. This integration is facilitated through RS485 serial communication.

Display Capabilities : The display is equipped to showcase a variety of information, including fuel rates, density data, stock availability, and engaging promotional messages and campaigns.

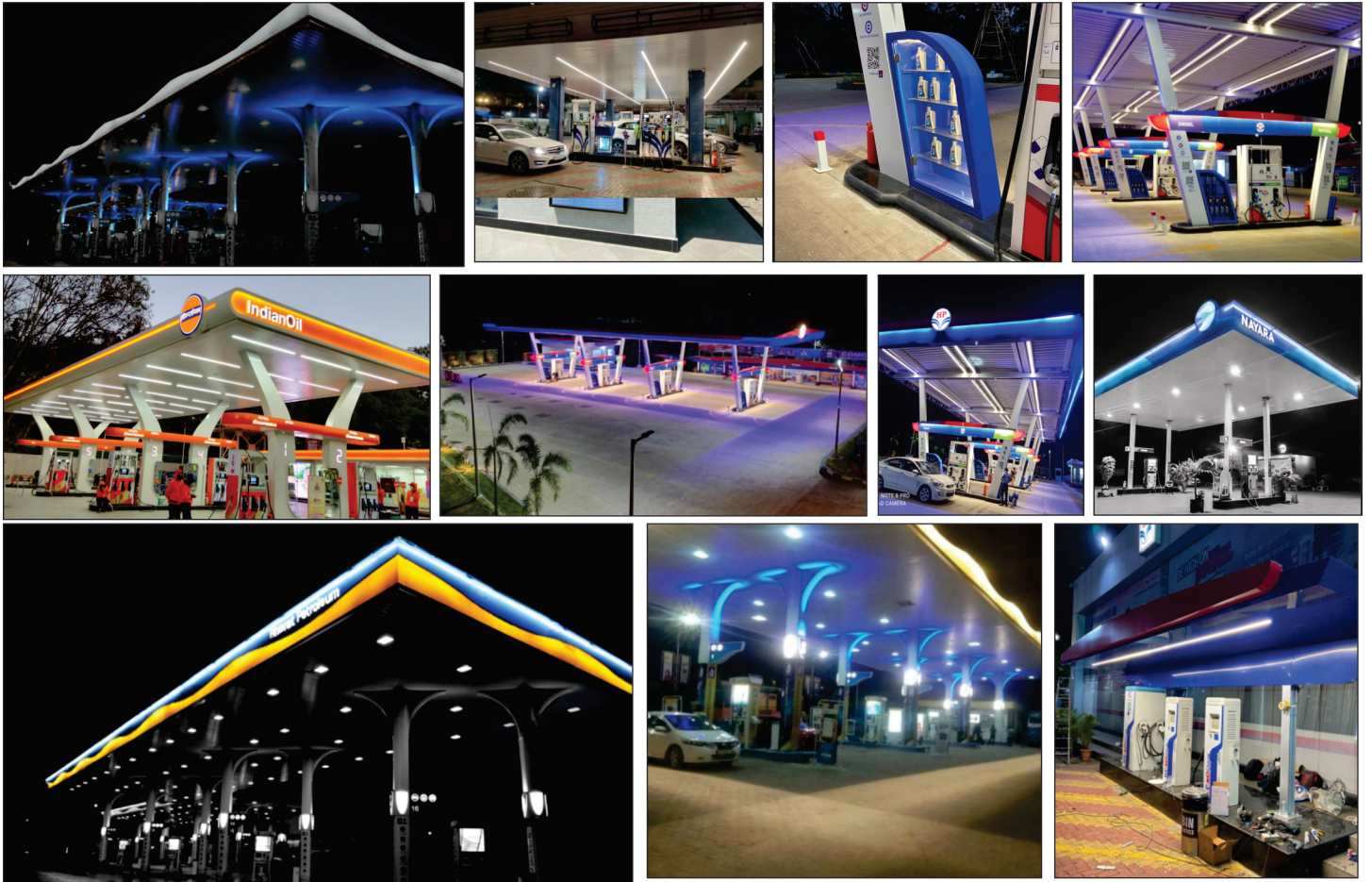
Versatile Formats : The display supports multiple formats for content presentation. These formats encompass videos, images, presentations, and various others, enhancing its ability to convey information effectively.

Control via Software : Control and management of the display are facilitated using the Absolute Signage Management software. This software enables easy manipulation and customization of displayed content.

Application Notes

1. Refineries.
2. Depots.
3. Terminals.
4. Buildings.
5. Sales room.
6. Fuel stations.
7. Transportation hubs.

LIGHTING SOLUTION





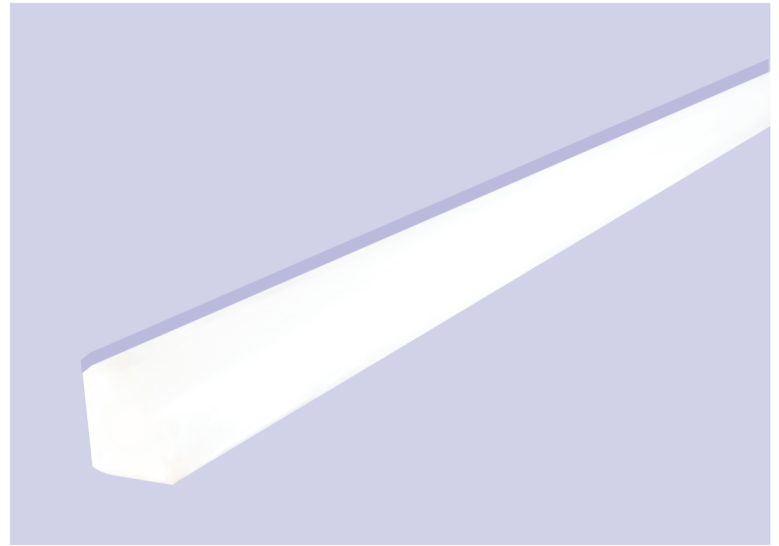
**LIGHTING
SOLUTION**

2.1 : Technical Light- Nayara Fascia Light



Product Parameter

1. Wattage	: 15-22W
2. Length	: Customizable 1m/2m/3m
3. CCT	: Customizable - RGBW
4. Optics	: 90 degree
5. Environmental Protection	: IP65



Product Features

- Narrow Beam Lens for the light to focus on the required area only.
- Aluminum Heatsink for heat to dissipate uniformly.
- IP65 Fixture for outdoor application.
- Length : Customizable.
- Colour : Customizable.

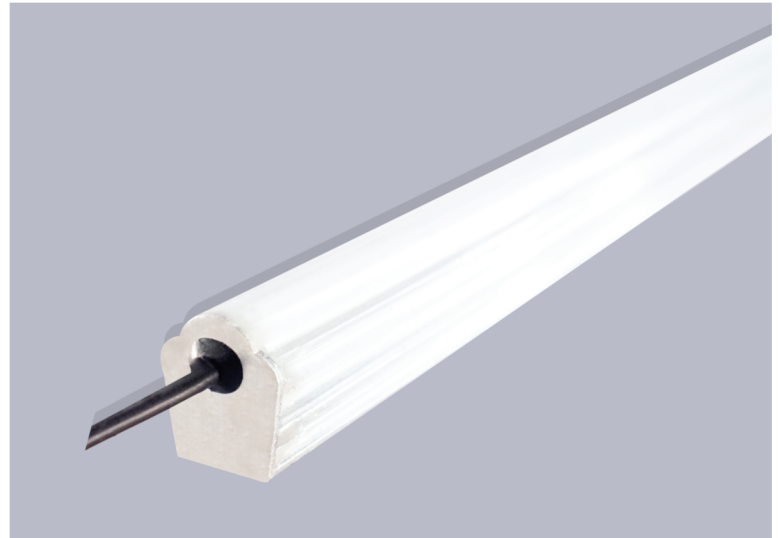
Application

- Fuel Stations
- Paint shops
- Malls
- Museums
- Showrooms
- Parking Lots
- Banks



Product Parameter

1. Wattage	: 15-22W
2. Length	: Customizable 1m/2m/3m
3. CCT	: Customizable - RGBW
4. Optics	: 30/60 degree
5. Environmental Protection	: IP65



Product Features

- Narrow Beam Lens for the light to focus on the required area only.
- Aluminum Heatsink for heat to dissipate uniformly.
- IP65 Fixture for outdoor application.
- Length : Customizable.
- Colour : Customizable.

Application

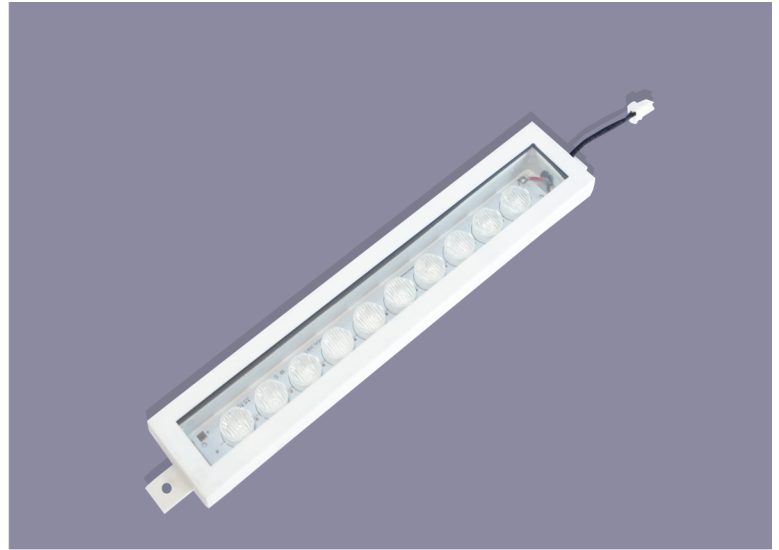
- Fuel Stations
- Paint shops
- Malls
- Museums
- Showrooms
- Parking Lots
- Banks

2.3 : Technical Light- Assymmetric Column Highlighter



Product Parameter

1. Wattage	: 15-22W
2. Length	: Customizable 1m/2m/3m
3. CCT	: Customizable - RGBW
4. Optics	: 30/60 degree
5. Environmental Protection	: IP54



Product Features

- Elliptical beam for the light to focus on the required area only.
- CRCA Heatsink for heat to dissipate uniformly.
- IP65 Fixture for outdoor application.
- Length: Customizable.
- Colour: Customizable.

Application

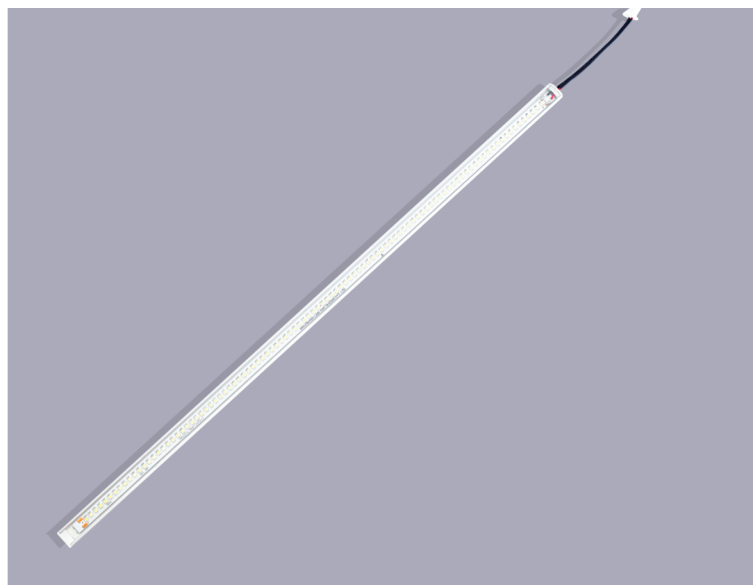
- Fuel Stations
- Paint shops
- Malls
- Museums
- Showrooms
- Parking Lots
- Banks

2.4 : Technical Light- Shelf Light



Product Parameter

1. Wattage	: 15-22W
2. Length	: Customizable 1m/2m/3m
3. CCT	: Customizable - RGBW
4. Optics	: Customizable
5. Environmental Protection	: IP40



Product Features

- Enhance the viewing experience of your merchandise.
- With high CRI, your product packaging and product can look very appealing.
- Properly lit merchandise shelves have a higher probability of sales.
- Length and Colour are customisable.
- Built to last

Application

- Fuel Stations
- Paint shops
- Malls
- Museums
- Showrooms
- Parking Lots
- Banks

2.5 : Linear Under Canopy Light



Product Parameter

1. Wattage	: 15-22W
2. Length	: Customizable 1m/2m/3m
3. CCT	: Customizable - RGBW
4. Optics	: 120 degree
5. Environmental Protection	: IP65



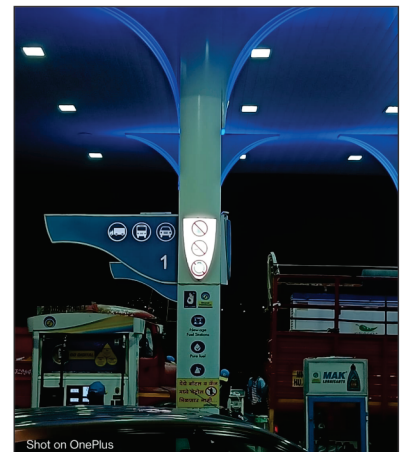
Product Features

- Customisable CCT ranging from 2700K up to 10,000K.
- Available in customizable length upto 8 feet.
- Can be surface or concealed within False ceiling.

Application

- Fuel Stations
- Paint shops
- Malls
- Museums
- Showrooms
- Parking Lots
- Banks

MODULES AND STRIPS





MODULES AND STRIPS



Product Parameter

1. Input Voltage	: DC 12V.
2. Power	: 0.72W.
3. Luminous Flux	: 120 Lm.
4. Lifetime	: 5 years.
5. Cascade Qty	: 30 modules/chain.
6. Colour	: Customizable.
7. IP Proofing	: IP67.



Product Features

- **Compact Size** : These modules are designed to be small and compact, making them suitable for applications where space is limited.
- **Customizable Lighting** : Many backlit mini modules offer customizable lighting options, allowing you to adjust the brightness, color options including RGB.
- **Durability** : These modules are IP67 built to withstand environmental conditions, making them suitable for both indoor and outdoor use.
- **Energy Efficiency** : Backlit mini modules are energy-efficient, consuming less electricity compared to traditional lighting sources.
- **Uniform Lighting** : Backlit regular modules are designed to provide uniform lighting across their surface, which is important for applications like signage and displays.

Application

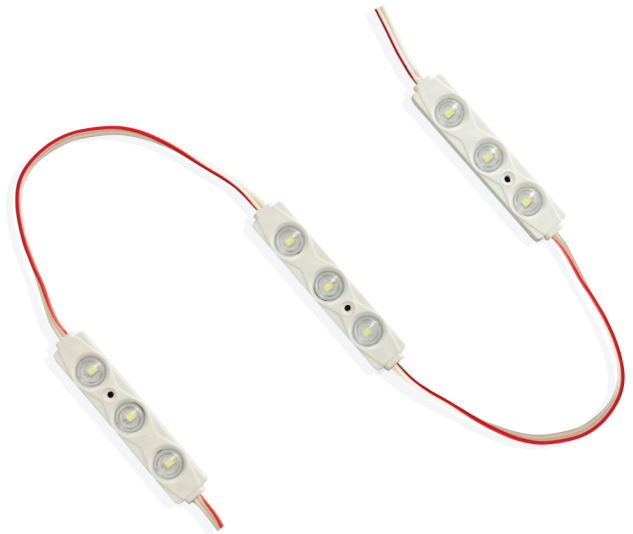
- Signage
- Cabinet and Shelf Lighting
- Home theaters
- Architectural Details
- Bars and restaurant menus
- Exhibition Booths
- Retail Displays
- Hoarding

3.2 : Regular Module



Product Parameter

1. Input Voltage	:	DC 12V.
2. Power	:	1.2W.
3. Luminous Flux	:	140 Lm.
4. Lifetime	:	5 years.
5. Cascade Qty	:	30 modules/chain.
6. Colour	:	Customizable.
7. IP Proofing	:	IP67.



Product Features

- **Versatile Sizes** : Regular are suitable for a wide range of applications, from small signs to large displays.
- **Customizable Lighting** : Many backlit mini modules offer customizable lighting options, allowing you to adjust the brightness, color options including RGB.
- **Durability** : These modules are IP67 built to withstand environmental conditions, making them suitable for both indoor and outdoor use.
- **Energy Efficiency** : Backlit mini modules are energy-efficient, consuming less electricity compared to traditional lighting sources.
- **Uniform Lighting** : Backlit regular modules are designed to provide uniform lighting across their surface, which is important for applications like signage and displays.

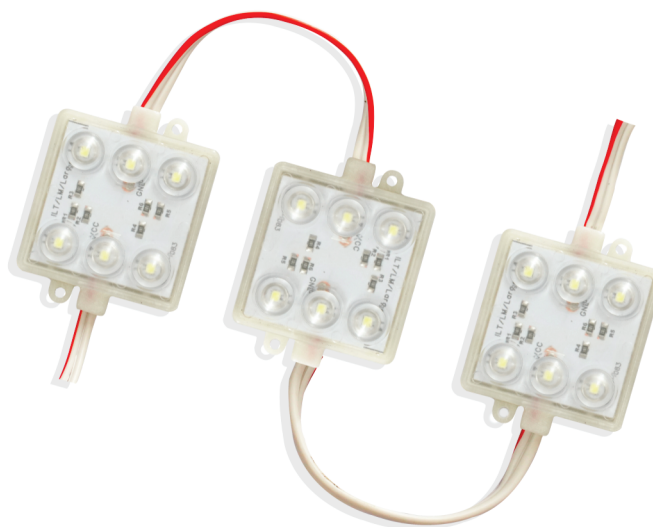
Application

- Signage
- Cabinet and Shelf Lighting
- Home theaters
- Architectural Details
- Bars and restaurant menus
- Exhibition Booths
- Retail Displays
- Hoarding



Product Parameter

1. Input Voltage	: DC 12V.
2. Power	: 1.4W.
3. Luminous Flux	: 140 Lm.
4. Lifetime	: 5 years.
5. Cascade Qty	: 30 modules/chain.
6. Colour	: Customizable.
7. IP Proofing	: IP67.



Product Features

- **Versatile Sizes** : Regular are suitable for a wide range of applications, from small signs to large displays.
- **Customizable Lighting** : Many backlit mini modules offer customizable lighting options, allowing you to adjust the brightness, color options including RGB.
- **Durability** : These modules are IP67 built to withstand environmental conditions, making them suitable for both indoor and outdoor use.
- **Energy Efficiency** : Backlit mini modules are energy-efficient, consuming less electricity compared to traditional lighting sources.
- **Uniform Lighting** : Backlit regular modules are designed to provide uniform lighting across their surface, which is important for applications like signage and displays.



Application

- Signage
- Cabinet and Shelf Lighting
- Home theaters
- Architectural Details
- Bars and restaurant menus
- Exhibition Booths
- Retail Displays
- Hoarding

3.4 : Light Bar



Product Parameter

1. Input Voltage	:	DC 12V.
2. Power	:	Customizable.
3. Length	:	1m / 2m.
4. Lifetime	:	5 years.
5. Colour	:	Customizable.
6. Application	:	Indoor.



Product Features

- **Slim Profile** : Light bars are often designed with a slim and low-profile form factor, making them suitable for a wide range of applications where space is limited.
- **Easy Installation** : Light bars are designed for easy installation and may include mounting brackets, clips, or adhesive backing for quick attachment to surfaces.
- **Color Options** : Some light bars offer various color options, including RGBW (Red, Green, Blue, White).
- **Mounting Options** : Depending on the design, light bars may offer different mounting options, including surface mount, recessed mount, or suspension.

Application

- Signage
- Cabinet and Shelf Lighting
- Home theaters
- Architectural Details
- Bars and restaurant menus
- Exhibition Booths
- Retail Displays
- Hoarding

3.5 : Rigid IP20 Strip



Product Parameter

1. Input Voltage	:	DC 12V.
2. Power	:	Customizable.
3. Length	:	1m / 2m.
4. Lifetime	:	5 years.
5. Colour	:	Customizable.
6. Application	:	Indoor.



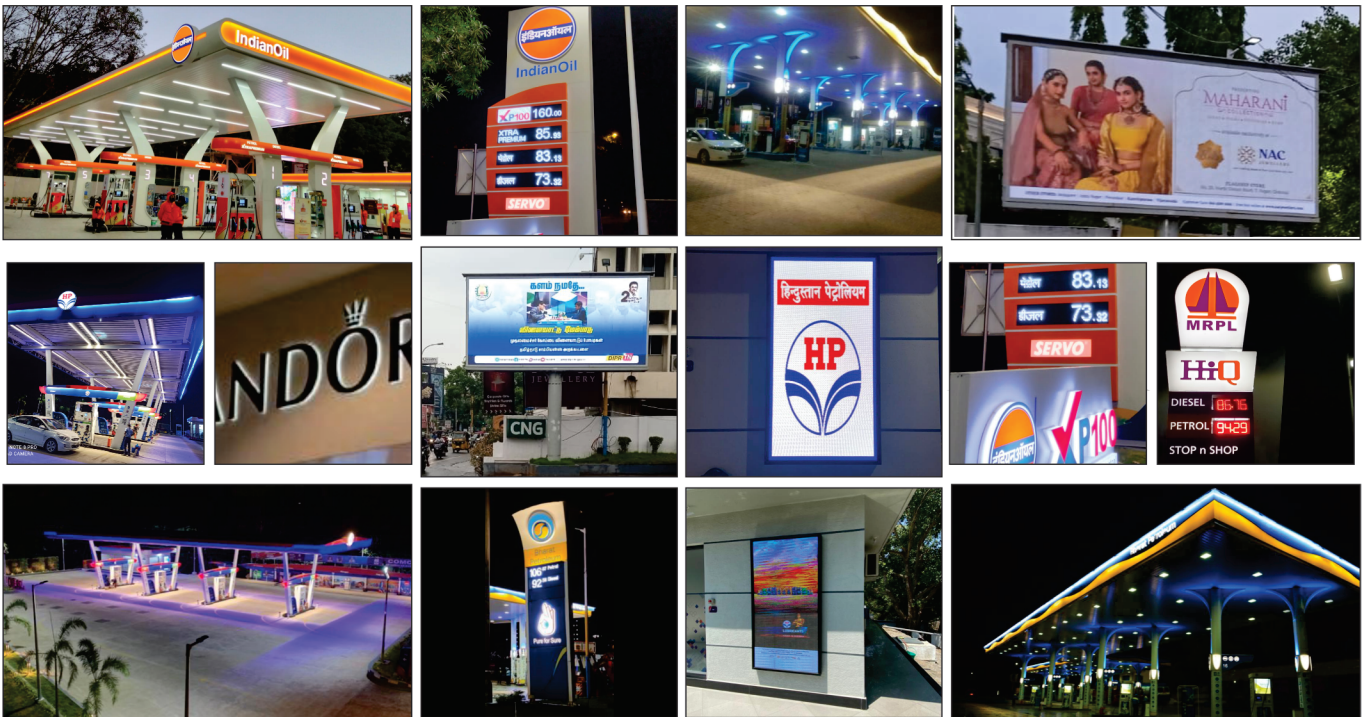
Product Features

- **Slim Profile** : Light bars are often designed with a slim and low-profile form factor, making them suitable for a wide range of applications where space is limited.
- **Easy Installation** : Light bars are designed for easy installation and may include mounting brackets, clips, or adhesive backing for quick attachment to surfaces.
- **Color Options** : Some light bars offer various color options, including RGBW (Red, Green, Blue, White).
- **Mounting Options** : Depending on the design, light bars may offer different mounting options, including surface mount, recessed mount, or suspension.

Application

- Signage
- Cabinet and Shelf Lighting
- Home theaters
- Architectural Details
- Bars and restaurant menus
- Exhibition Booths
- Retail Displays
- Hoarding

POWER SUPPLY SOLUTION





POWER SUPPLY SOLUTION

4.1 : CONSTANT VOLTAGE POWER SUPPLY OUTDOOR



APPLICATIONS :



Displays :
Large Format Displays, LED Scroller Displays



Computer Systems :
Motherboards, Hard drives, Peripherals



IOT Devices :
Sensors, Microcontrollers, Embedded Circuits



Outdoor Wireless Communication :
Wi-Fi Routers, Wireless Access points, IoT Gateways



Solar Power systems

FEATURES :

- Thermally Optimized Metal Case
- Operating Ambient Temperature range: (-10°C) to 50°C
- Case Temperature: tc-75(°C)
- Isolated Output
- Short-circuit Protection
- Efficiency >88%
- Power Factor > 0.95, ATHD <10%
- Wide Operating Range : 140-300Vac
- Inbuilt surge protection 4KV
- Input Over Voltage Protection with Auto recovery
- BIS Available
- Double Phase 440V Protection
- Surge Protect L/N = 4KV; L/E=6KV; N/E=6KV Protection

LINEAR SHAPE

Model Number	Input Operating Voltage (VAC)	Output Voltage (Vdc)	Output Current (mA)	Output Power (W)	Efficiency	Box Dimensions (LXWXH) in mm
ILT-CV-50W-5V	140-300	5	10	50	>87%	240X44X40
ILT-CV-60W-5V	140-300	5	12	60	>87%	240X44X40
ILT-CV-100W-5V	140-300	5	20	100	>87%	240X44X40

4.2 : CONSTANT VOLTAGE POWER SUPPLY OUTDOOR



APPLICATIONS :



LED Lighting :
Linear Lights, Backlighting Modules and LED strip lights



Security Systems :
Cameras, Sensors, Access Control Devices



Industrial Automation :
Microcontrollers, Motors, Control Panels



Telecommunications :
Routers, Switches, Network Devices



Consumer electronics:
Routers, Set-Top Box, CCTV

FEATURES :

- Thermally Optimized Metal Case
- Operating Ambient Temperature range: (-10°C) to 50°C
- Case Temperature: tc-75(°C)
- Isolated Output
- Short-circuit Protection
- Efficiency >88%
- Power Factor > 0.95, ATHD <10%
- Wide Operating Range : 140-300Vac
- Inbuilt surge protection 4KV
- Input Over Voltage Protection with Auto recovery
- BIS Available
- Double Phase 440V Protection
- Surge Protect L/N = 4KV; L/E=6KV; N/E=6KV Protection

LINEAR SHAPE

Model Number	Input Operating Voltage (VAC)	Output Voltage (Vdc)	Output Current (mA)	Output Power (W)	Efficiency	Box Dimensions (LXWXH) in mm
ILT-CV-40W-12V	140-300	12	3.3	40	>83%	200X44X40
ILT-CV-60W-12V	140-300	12	5	60	>84%	200X44X40
ILT-CV-100W-12V	140-300	12	8.3	100	>89%	200X44X40
ILT-CV-150W-12V	140-300	12	12.5	150	>83%	200X44X40
ILT-CV-200W-12V	140-300	12	16.6	200	>83%	200X44X40

4.3 : CONSTANT VOLTAGE POWER SUPPLY OUTDOOR



APPLICATIONS :



Outdoor Lighting Systems :
Landscape Lighting, Street Lighting, Parking Lot Lighting, Architectural Lighting



Security Systems :
Cameras, Sensors, Access Control Devices



Outdoor Automation and Control Systems :
Irrigation systems, gate openers, motorised equipments



Electric Vehicle Applications :
Electric Scooters, Electric bikes, Electric charging stations



Outdoor Telecommunications :
Wireless Antennas, Base Stations and repeaters

FEATURES :

- Thermally Optimized Metal Case
- Operating Ambient Temperature range: (-10°C) to 50°C
- Case Temperature: tc-75(°C)
- Isolated Output
- Short-circuit Protection
- Efficiency >88%
- Power Factor > 0.95, ATHD <10%
- Wide Operating Range : 140-300Vac
- Inbuilt surge protection 4KV
- Input Over Voltage Protection with Auto recovery
- BIS Available
- Double Phase 440V Protection
- Surge Protect L/N = 4KV; L/E=6KV; N/E=6KV Protection

LINEAR SHAPE

Model Number	Input Operating Voltage (VAC)	Output Voltage (Vdc)	Output Current (mA)	Output Power (W)	Efficiency	Box Dimensions (LXWXH) in mm
ILT-CV-40W-24V	140-300	24	3	40	>87%	125X40X30
ILT-CV-60W-24V	140-300	24	8.3	60	>87%	125X40X30

4.4 : CONSTANT CURRENT LED DRIVER OUTDOOR



APPLICATIONS :



General Lighting :
LED bulbs, Strips, Panels and fixtures



Commercial Buildings
Linear light, Panels, Street light



Industrial Facilities.
Highbay light, Street light



Healthcare Facilities.
Clean room light, Linear light, Panel light

FEATURES :

- Thermally Optimized Metal Case
- Operating Ambient Temperature range: (-10°C) to 50°C
- Case Temperature: tc-75(°C)
- Isolated Output
- Short-circuit Protection
- Efficiency >88%
- Power Factor > 0.95, ATHD <10%
- Wide Operating Range : 140-300Vac
- Inbuilt surge protection 4KV
- Input Over Voltage Protection with Auto recovery
- BIS Available
- Double Phase 440V Protection
- Surge Protect L/N = 4KV; L/E=6KV; N/E=6KV Protection

LINEAR SHAPE

Model Number	Input Operating Voltage (VAC)	Output Voltage (Vdc)	Output Current (mA)	Output Power (W)	Efficiency	Box Dimensions (LXWXH) in mm
ILT-CC-20W-30V	100-300	24-36	0.45	20	>87%	125X40X30
ILT-CC-40W-60V	100-300	48-60	0.65	40	>87%	125X40X30
DLP-50-LD-D	100-300	48-60	0.65	40	>89%	125X40X30



4.5 : CONSTANT CURRENT LED DRIVER OUTDOOR



APPLICATIONS :

-  **General Lighting :**
LED bulbs, Strips, Panels and fixtures
-  **Commercial Buildings**
Linear light, Panels, Street light
-  **Industrial Facilities.**
HighBay light, Street light
-  **Healthcare Facilities.**
Clean room light, Linear light, Panel light

FEATURES :

- Thermally Optimized Metal Case
- Operating Ambient Temperature range: (-10°C) to 50°C
- Case Temperature: tc-75(°C)
- Isolated Output
- Short-circuit Protection
- Efficiency >88%
- Power Factor > 0.95, ATHD <10%
- Wide Operating Range : 140-300Vac
- Inbuilt surge protection 4KV
- Input Over Voltage Protection with Auto recovery
- BIS Available
- Double Phase 440V Protection
- Surge Protect L/N = 4KV; L/E=6KV; N/E=6KV Protection

LINEAR SHAPE

Model Number	Input Operating Voltage (VAC)	Output Voltage (Vdc)	Output Current (mA)	Output Power (W)	Efficiency	Box Dimensions (LXWXH) in mm
ILT-CC-80W-105V	140-270	85-115	0.7	80	>91%	250X44X40



4.6 : SURGE PROTECTION DEVICE OUTDOOR



APPLICATIONS :

- **Linear Lighting**
- **2X2 Clean room**
- **2X2 Edgelit**
- **2x2 Backlit**
- **Designer Lighting**

FEATURES :

- Save device for voltage surges as high as 10KV
- Can survive : 10-12 cycles of 10KV surges
- Installation type : Series Installation
- After 10-12 cycles of 10kv surge, it will remain in off condition so as to safe guard your costly infrastructure
- Installation must be done with line, neutral and ground connection

INNOTRONIX LABS AND TRADING PVT. LTD

Add:Gat no. 77 & 81, Tal. Bhor, Dist. Pune, Shindewadi,
Pune, Maharashtra, India - 412205

Tell:+91 9579662819

Website:www.innotronixlabs.com

E-mail: harikesh@innotronixlabs.com